

# B2 - Threshing Barn

## 3 Bedroom

(180m<sup>2</sup> - 1937ft<sup>2</sup>)

### Ground Floor

1. Kitchen/Living/Dining Room  
7.87m x 9.50m (25'82" x 31'17")

2. Pantry

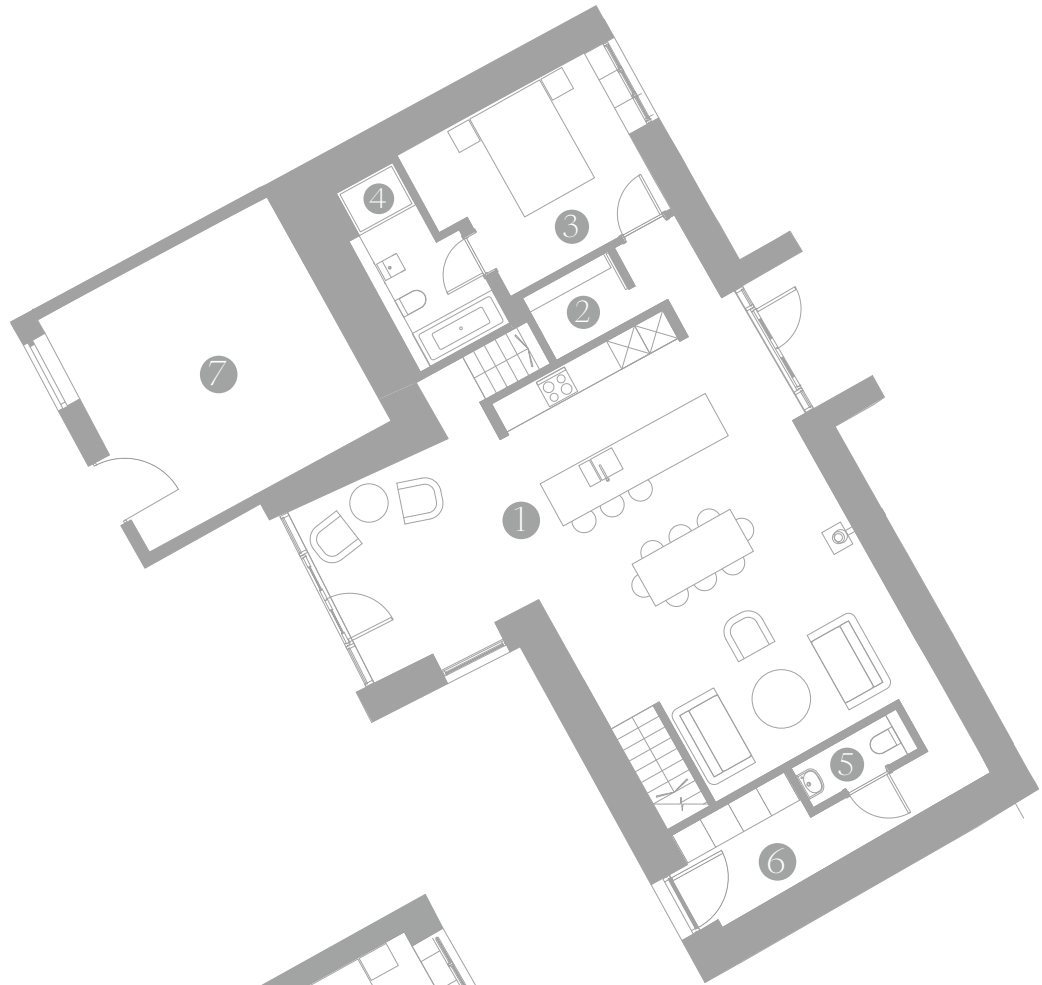
3. Bedroom 3  
3.36m x 3.99m (11'02" x 13'09")

4. En-Suite  
3.69m x 1.91m (12'11" x 6'27")

5. W/C  
0.85m x 2.25m (2'79" x 7'38")

6. Utility  
1.95m x 2.45m (6'39" x 8'04")

7. Store  
3.69m x 1.91m (12'11" x 6'27")



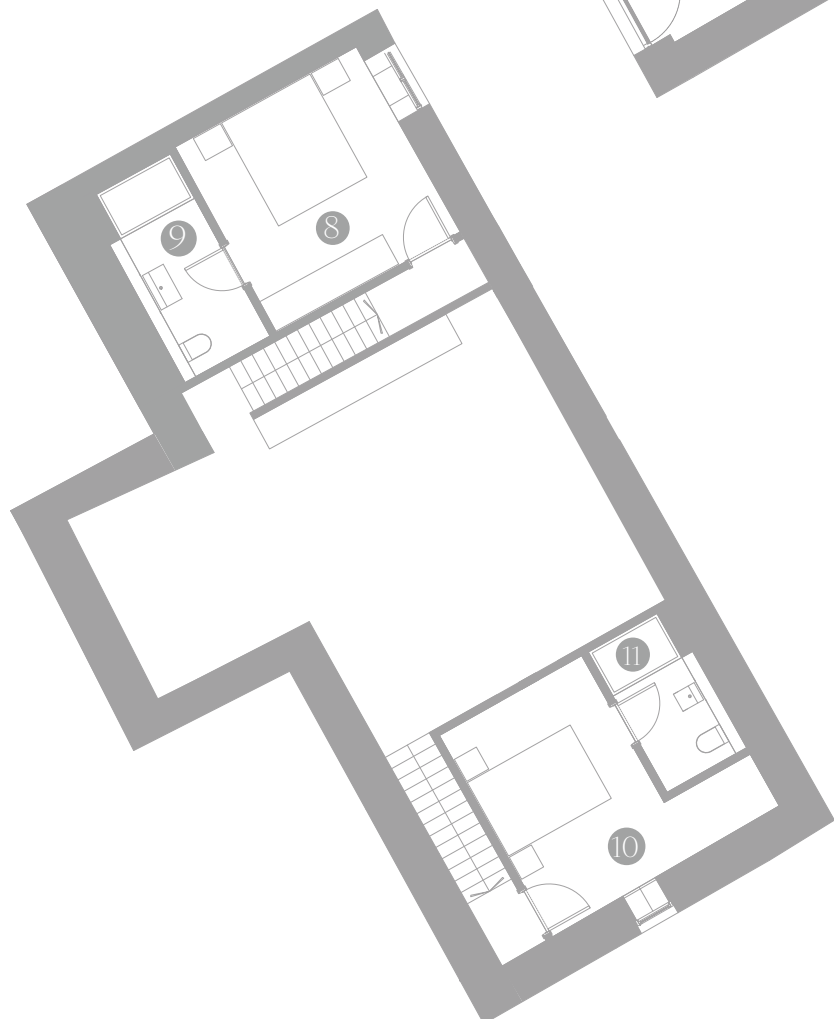
### First Floor

8. Master Bedroom  
3.77m x 3.69m (12'37" x 12'11")

9. En-Suite  
3.7m x 1.73m (12'14" x 5'68")

10. Bedroom 2  
4.09m x 2.91m (13'42" x 9'55")

11. En-Suite  
2.86m x 1.65m (9'38" x 5'41")



The room sizes shown above are approximate overall finished room sizes of the areas indicated and are subject to normal building tolerances (i.e. ± 75mm). Elevations shown are not intended to represent any particular plot. Furniture is not to scale and an indication only. Purchasers are advised to inspect plot specific information available from our sales team.